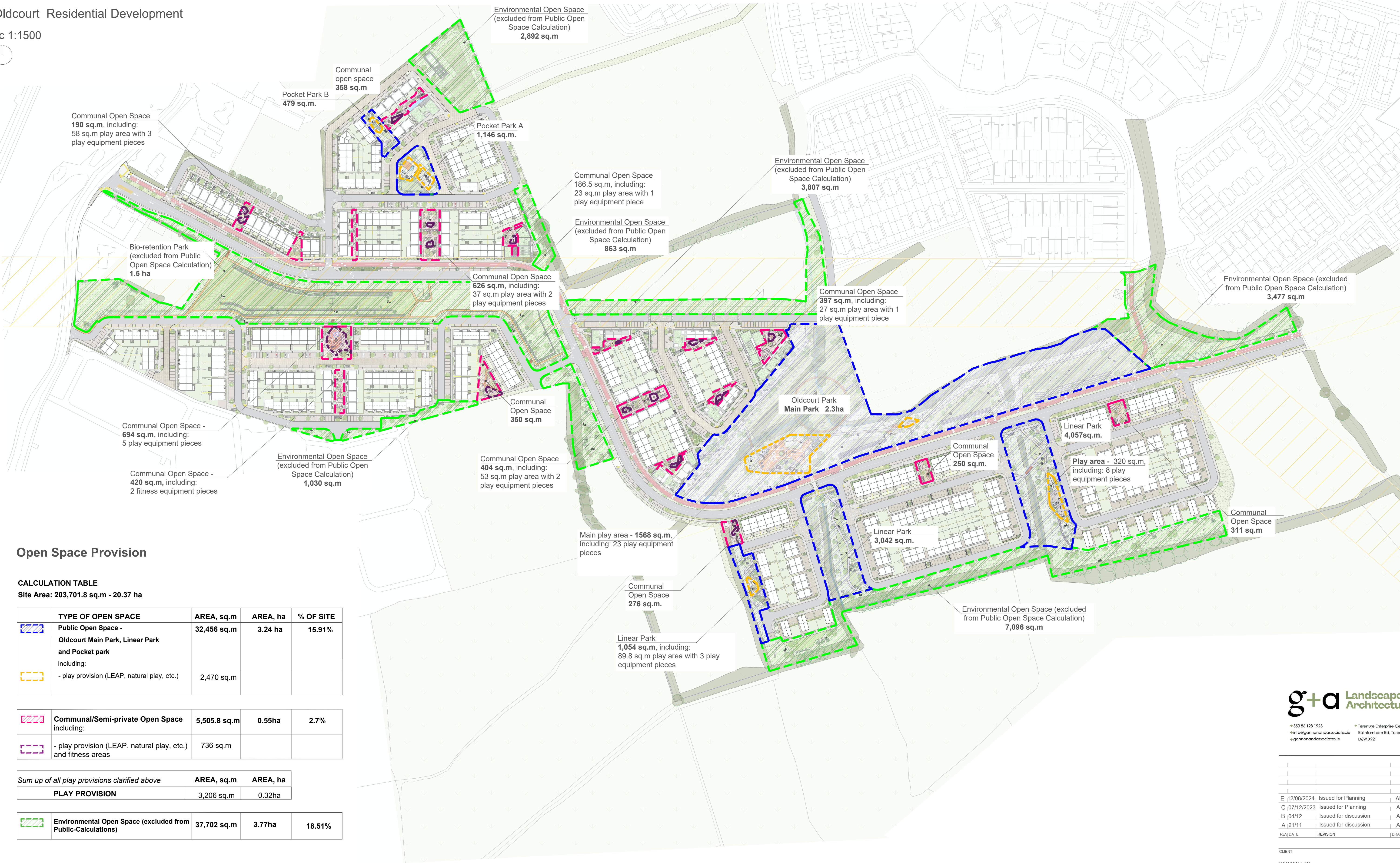


Open Space Provision

Oldcourt Residential Development

sc 1:1500



Open Space Provision

CALCULATION TABLE
Site Area: 203,701.8 sq.m - 20.37 ha

	TYPE OF OPEN SPACE	AREA, sq.m	AREA, ha	% OF SITE
	Public Open Space - Oldcourt Main Park, Linear Park and Pocket park including:	32,456 sq.m	3.24 ha	15.91%
	- play provision (LEAP, natural play, etc.)	2,470 sq.m		
	Communal/Semi-private Open Space including:	5,505.8 sq.m	0.55ha	2.7%
	- play provision (LEAP, natural play, etc.) and fitness areas	736 sq.m		
Sum up of all play provisions clarified above		AREA, sq.m	AREA, ha	
PLAY PROVISION		3,206 sq.m	0.32ha	
	Environmental Open Space (excluded from Public-Calculations)	37,702 sq.m	3.77ha	18.51%

E	12/08/2024	Issued for Planning	AP	JG
C	07/12/2023	Issued for Planning	AP	JG
B	04/12	Issued for discussion	AP	JG
A	21/11	Issued for discussion	AP	JG
REV	DATE	REVISION	DRAWN	CHECKED